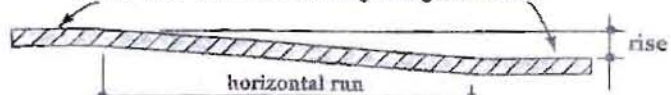


SIDE REACH **FRONT REACH**

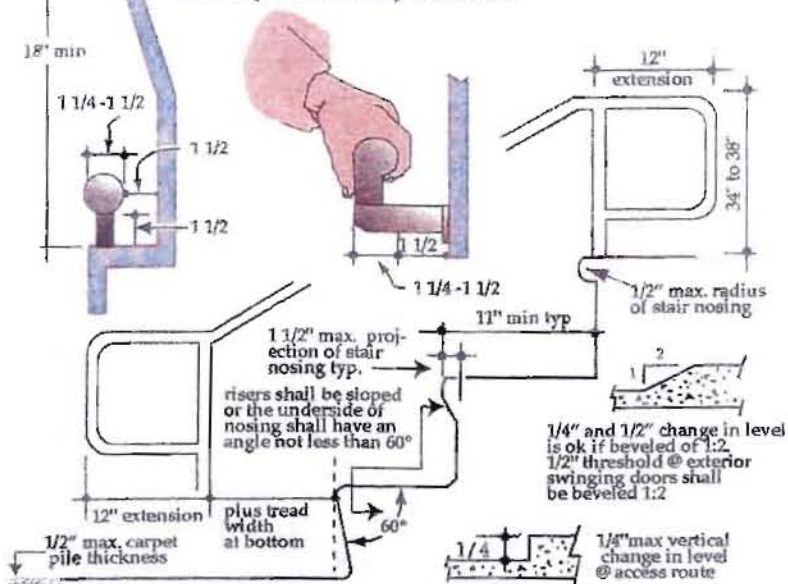
60" (L) level landing top and bottom of ramp
 60" (L) X 60" (W) when landing changes direction



A slope > 1:20 is considered a RAMP

| Slope | max rise | max run |
|----------------|----------|---------|
| 1:12 to < 1:16 | 30" | 30'- 0" |
| 1:16 to < 1:20 | 30" | 40'- 0" |

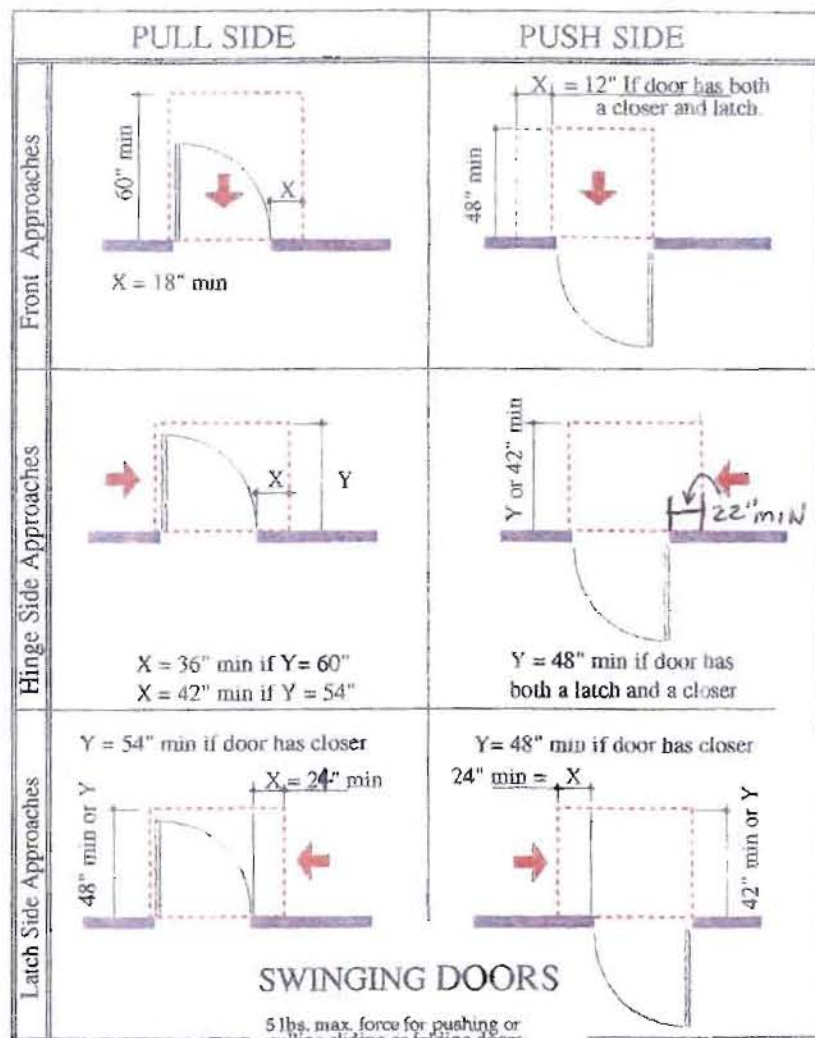
Max. slope of ramp in *new construction* is 1:12
 Max. accessible route cross slope is 1:50
 Max slope of curb ramp flare is 1:10



Access paths.

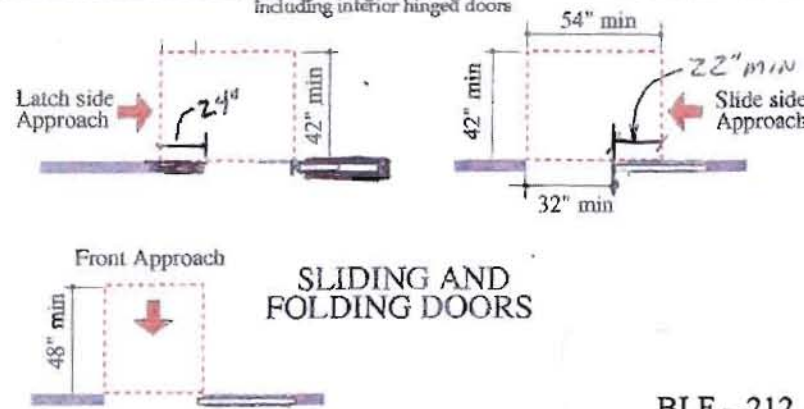
ramps, walkways, stairs and handrails

Surface at accessible route shall be stable firm & slip resistant.



SWINGING DOORS

5 lbs. max. force for pushing or pulling sliding or folding doors including interior hinged doors



SLIDING AND FOLDING DOORS



STANDARD STALL TOILETS

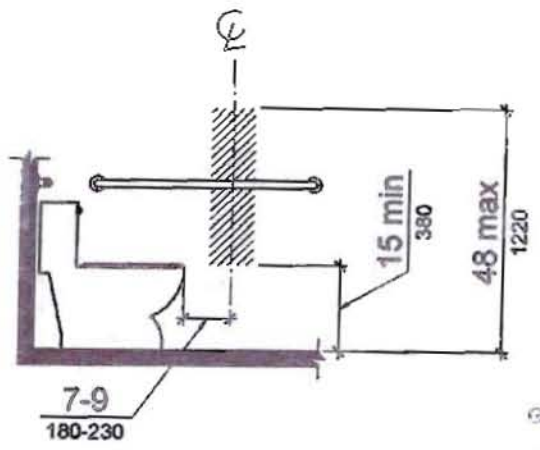
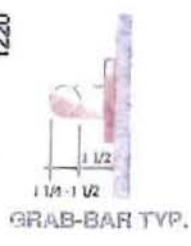
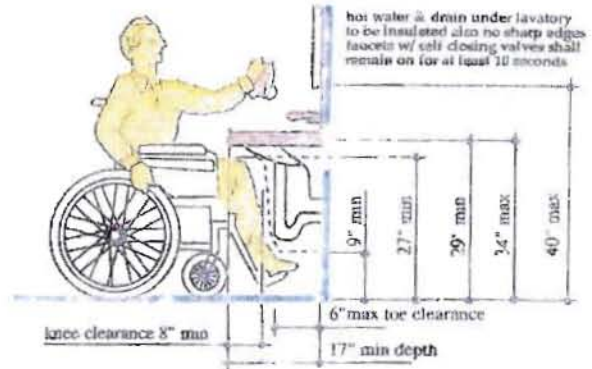


Figure 604.7 Dispenser Outlet Location



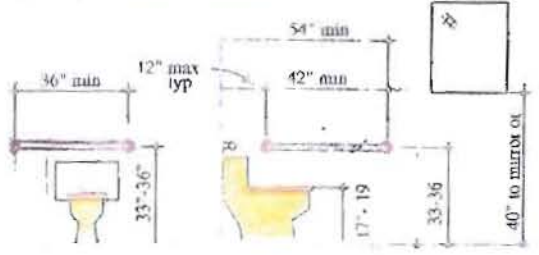
GRAB-BAR TYP.



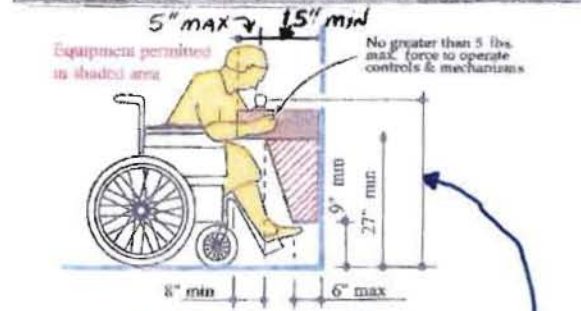
LAVATORY CLEARANCES



16-18



GRAB-BARS AT WATER CLOSETS (TANK-TYPE) FLOOR MOUNTED



CLEAR FLOOR SPACE

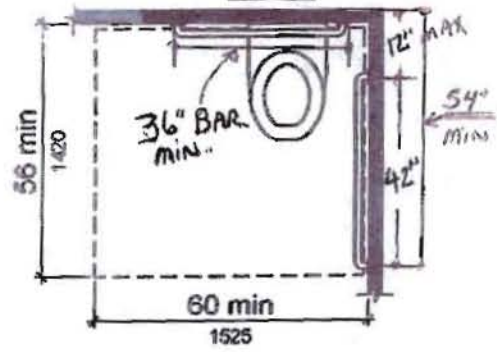
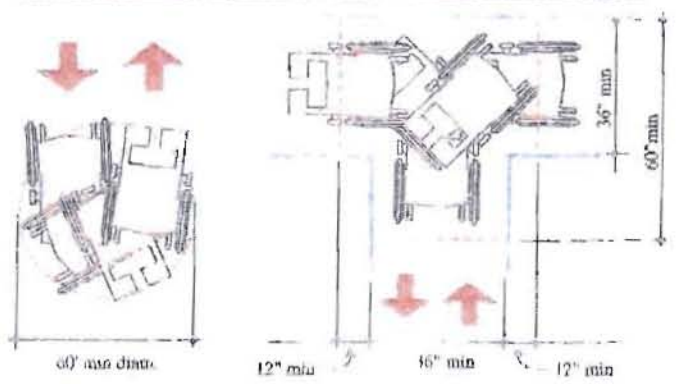
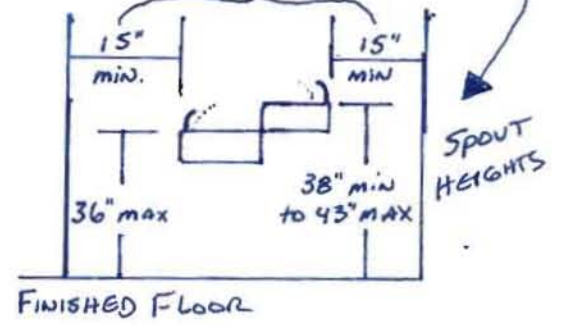


Figure 604.3.1

Size of Clearance at Water Closets



WHEELCHAIR TURNING SPACE



FINISHED FLOOR

DRINKING FOUNTAINS

2 SPOUT HEIGHTS REQ. IF DRINKING FOUNTAINS ARE PROVIDED

604.3.2 Overlap. The required clearance around the water closet shall be permitted to overlap the water closet, associated grab bars, dispensers, sanitary napkin disposal units, coat hooks, shelves, accessible routes, clear floor space and clearances required at other fixtures, and the turning space. No other fixtures or obstructions shall be located within the required water closet clearance.